

PortableSync – User guide

By Patrick Christmann – <http://miniapps.free.fr>

1. Presentation

PortableSync is a free software, usefull for data synchronisation between two computers, or between hard drive, or usb drives.

This software has been written in C++, using the wxWidgets library, and wxDevCpp as IDE.

2. Installation

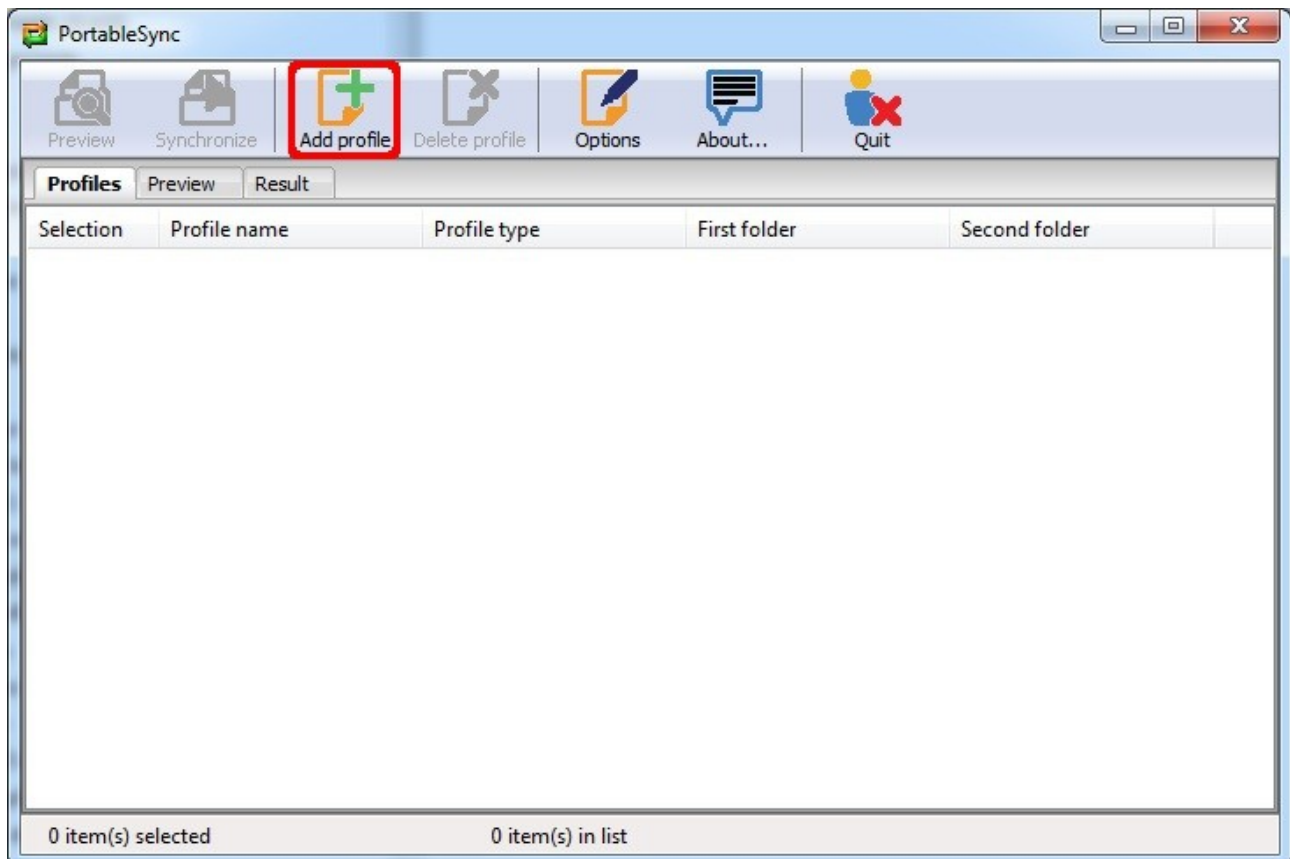
This software is compatible with Windows XP 32 bits, Windows Vista 32 and 64 bits, Windows 7 32 and 64 bits.

The software does not need any installation. Unzip the .zip archive, or use the auto-extractible .exe archive. The extracted software can be moved to another hard drive or usb key. If you move the software, take care to move also the configuration files, otherwise the application will not start.

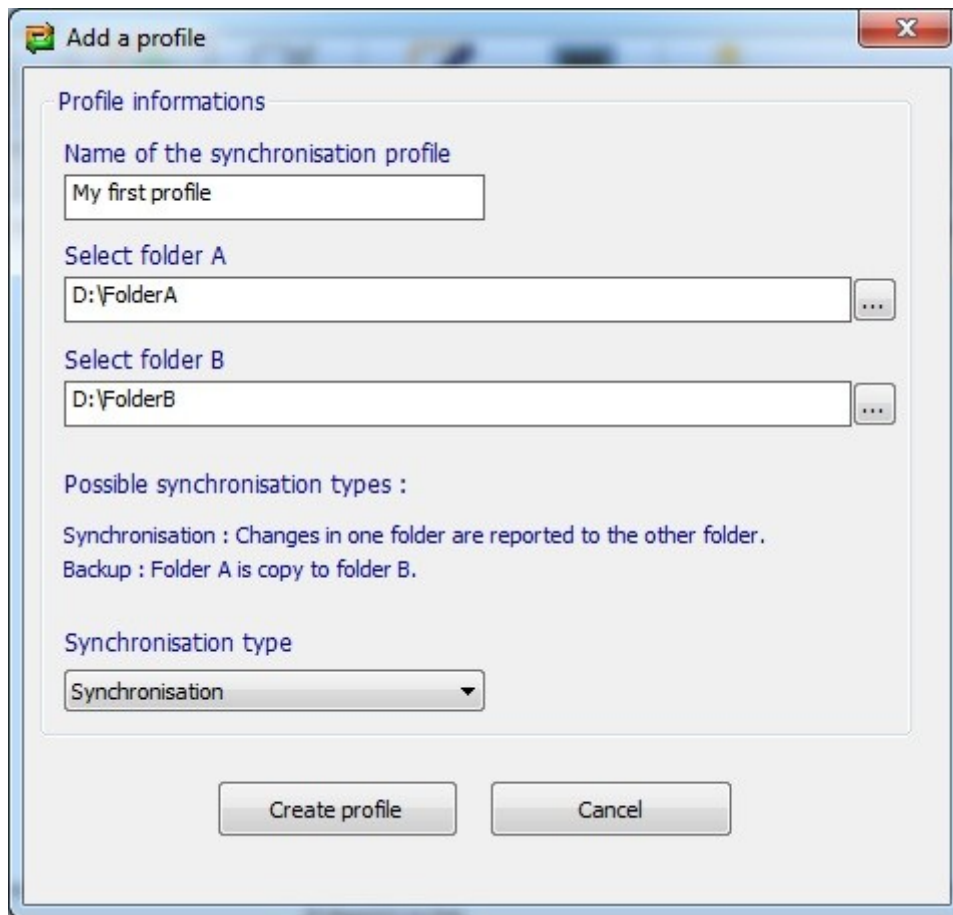
3. Step 1 – Create a profile

PortableSync works with profiles. One profile describes how two folders have to be synchronized.

To add a new profile, click on the button « Add profile ».



A new window will be displayed, which allows you to describe your profile.



Give a name to the profile, and select the folders to synchronise. Select the type of the synchronisation and click on button «Create profile ».

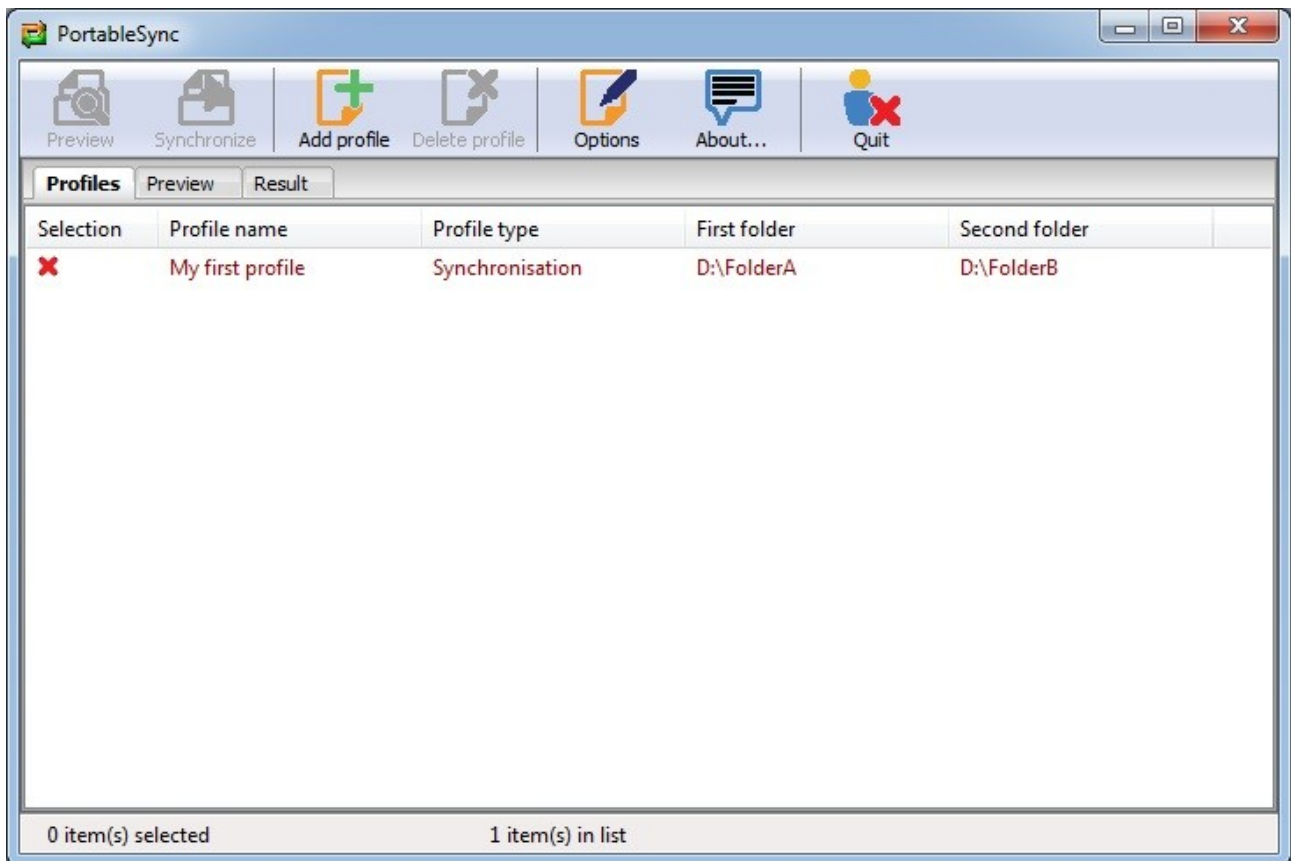
Remark :

In case of synchronisation, a change made in one folder will be transmit to the other folder during synchronisation. For example, if I add a new file in a folder, the file will be copied into the other folder. If I delete a file, this file will also be deleted in the other folder. A file that changes will also be detected and copied to the other folder.

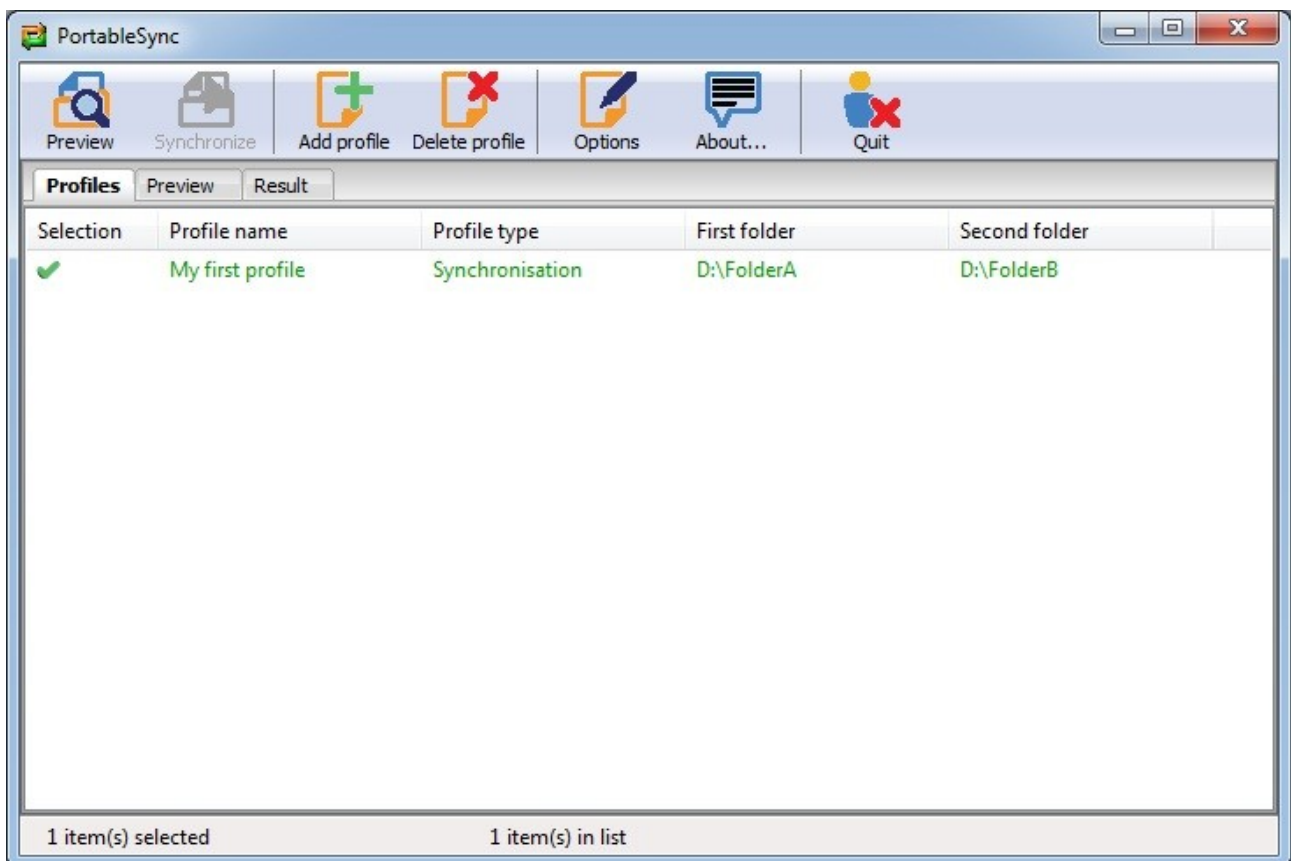
In case of backup, the folder B will always be a copy of folder A. So changes in folder B will be copied to folder B.

4. Step 2 – Synchronisation

As soon a profile has been created, he will appear in the profile list in red. The color only means that the profile is not selected.



A click to the profile will select him, and the color will change to green. The number of profiles, and the number of selected profiles is displayed in the status bar at the bottom of the window.



You will see that two buttons in the toolbar will be activated as soon you select a profile. The first is the button « Delete profile », which allows you to delete the selected profiles in the list. The second button « Preview » allows you to start the analyze of the folders..

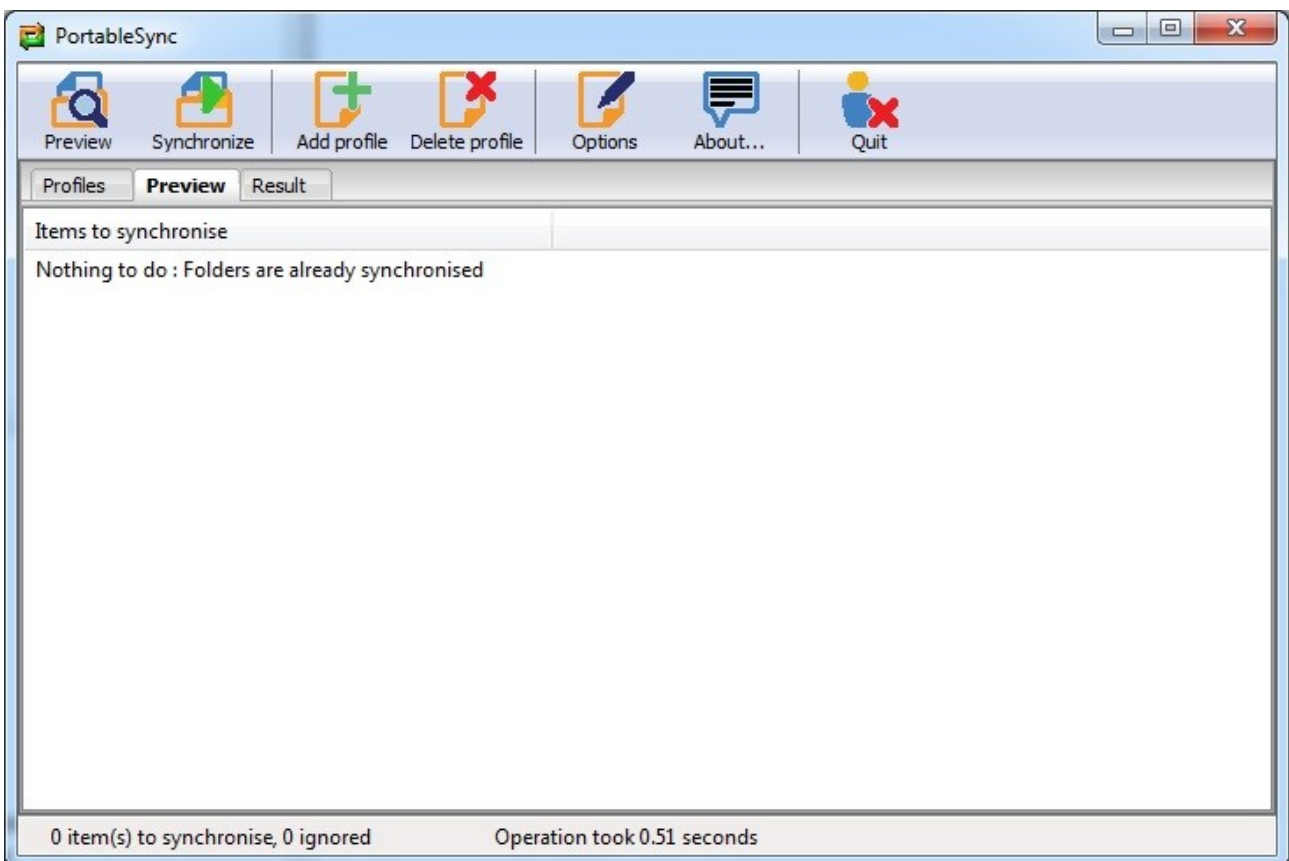
Remark:

In case of synchronisation, the first analyse will try to synchronise files and folders, using the most recent files. Every file or folder present in only one folder will be copy into the other folder.

During the analyse, a dialog pop up and show you the elapsed time, and the current file. If the progress bar does not move, and if the same file is displayed for a long time, you may not have the rights to access this folder, so check your rights !

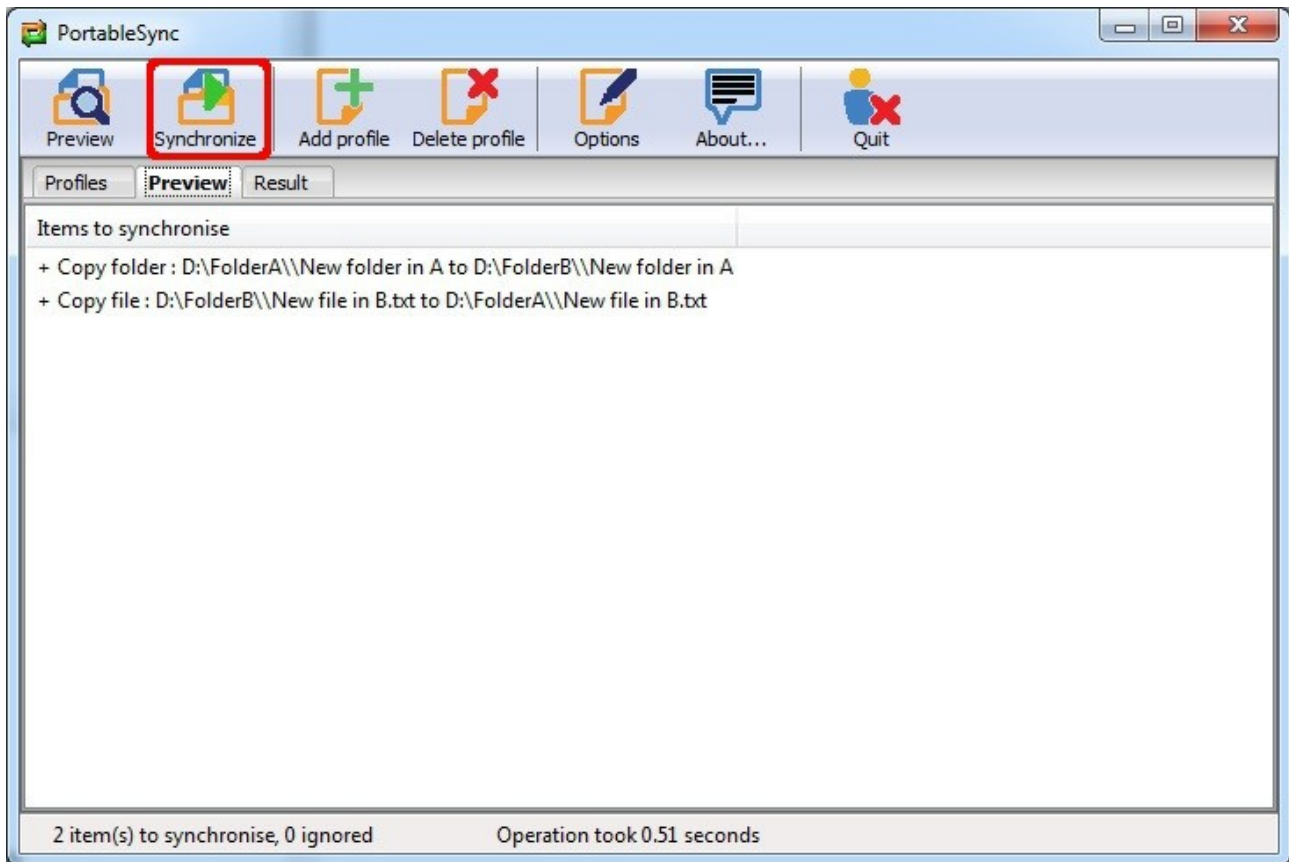
For the first synchronisation, it would be nice to have two identical folders, for example you have just copy a folder from you hard drive to an usb key, and you want to have them synchronized using PortableSync.

In such a case, there will be no file to synchronise, but PortableSync will now have an image of the folders, and will know what to do next time !



After the first synchronisation, if you make some changes in one of the folder, the analyse will be able to recognize which operation has to be done, and will display them in the preview. You can ignore some operations, by clicking on it in the list, those items will not be synchronised.

After the analyse, the button « Synchronize » will be activated in the toolbar, this allows you to start the operations listed in the preview.

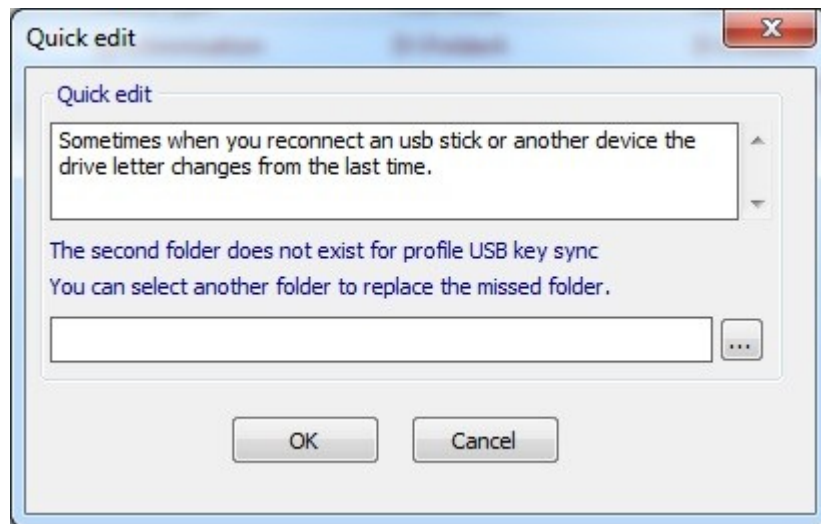


After the synchronisation, the last tab « Result » will be displayed, and shows you the result of the synchronisation. If a file or folder could not be copy, you should check if you have write rights to the destination folder. If a file or folder could not be deleted, make sure the file is not open and in use.

5. Quick edit mode

In case of synchronisation with a removable usb disk, or key, it may happen that the drive letter changes when you plug it in again.

For example, you synchronise a folder of your local disk D:, with another folder on an usb key, located at V:, but at the next plug, the drive letter of the usb key has changed and is now V: ! Don't panic, you will not to have to recreate a profile, start the analyse as you did it last time, this will display the quick edit dialog.



Select the folder on the usb key which fits to the folder described in the profile description, so the folder **U:\Data\MyPictures** will become **V:\Data\MyPictures** in our last example. The new drive letter will be used for the analyze, which will use the last image of the profile.

This software is delivered as is, without warranty.

The author will not be responsible for lost data that may occur during the use of the application. Use it at your own risk !